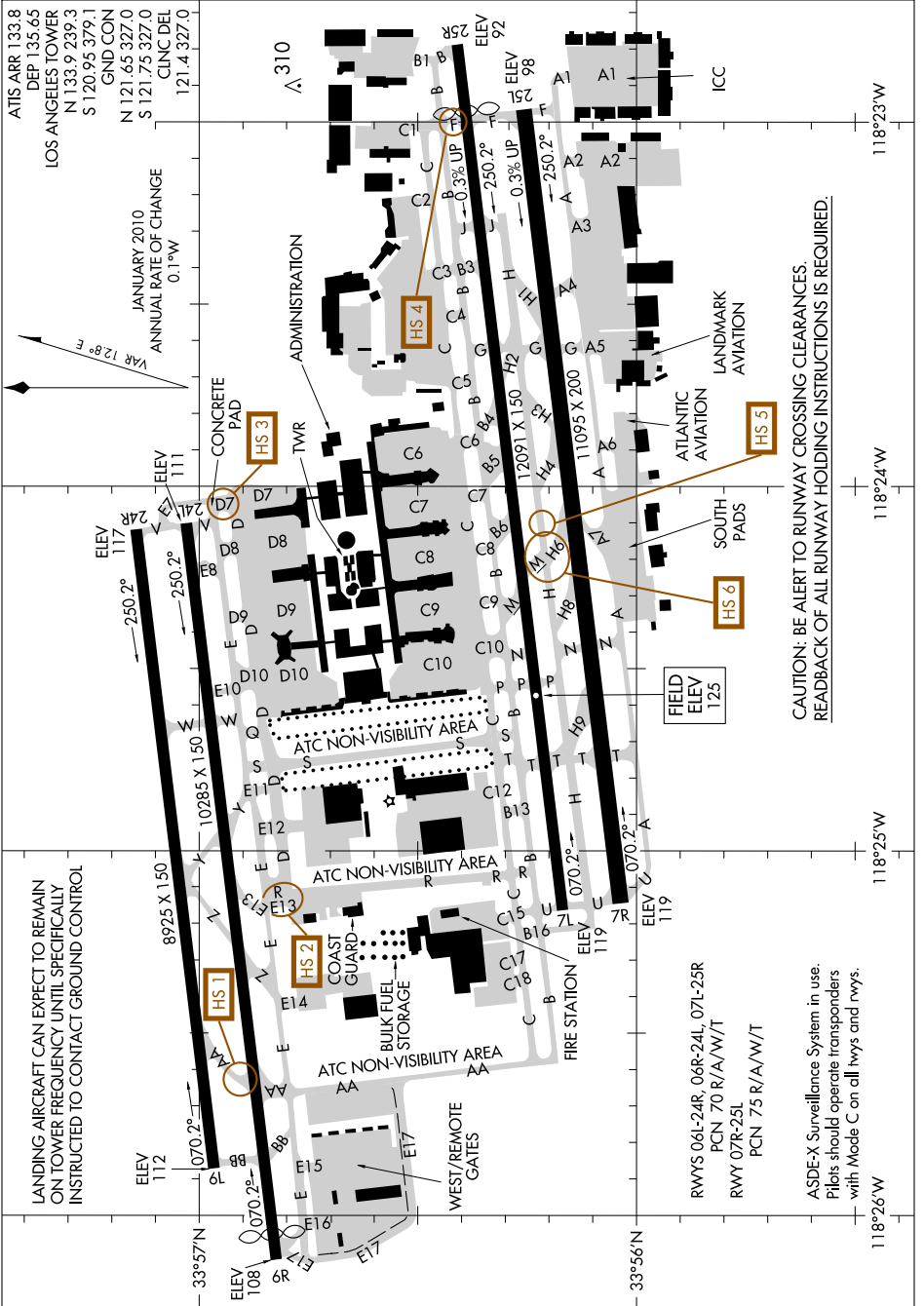


AIRPORT DIAGRAM

AL-237 (FAA)

LOS ANGELES INTL (LAX)
LOS ANGELES, CALIFORNIA

SW-3, 31 MAY 2012 to 28 JUN 2012



LANDING AIRCRAFT CAN EXPECT TO REMAIN ON TOWER FREQUENCY UNTIL SPECIFICALLY INSTRUCTED TO CONTACT GROUND CONTROL

CAUTION: BE ALERT TO RUNWAY CROSSING CLEARANCES. READBACK OF ALL RUNWAY HOLDING INSTRUCTIONS IS REQUIRED.

RWYS 06L-24R, 06R-24L, 07L-25R
PCN 70 R/A/W/T
RWY 07R-25L
PCN 75 R/A/W/T

ASDE-X Surveillance System in use. Pilots should operate transponders with Mode C on all twys and rwys.

SW-3, 31 MAY 2012 to 28 JUN 2012

AIRPORT DIAGRAM

LOS ANGELES, CALIFORNIA
LOS ANGELES INTL (LAX)